

TRANS-LUX

TL-USIII Series

6.7mm | 8.3mm | 10mm

- High Brightness, Up to 8,000nits.
- High Contrast Ratio.
- Greater Wide Viewing Angle.
- Front and Rear Maintenance.



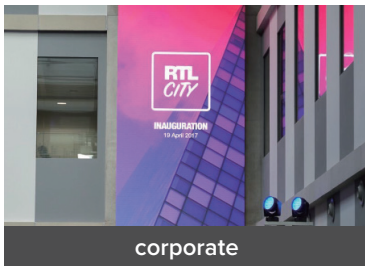
High Brightness & Contrast

This product features SMD, (Surface Mount Diode), the technology that creates a better viewing effect with less sunlight reflecting on the surface, and for added durability, the TL-USIII line is waterproof.

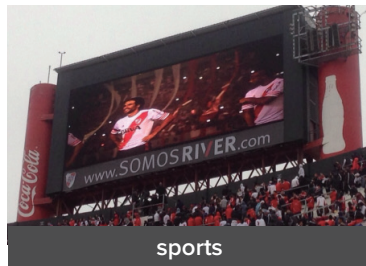
Wide Viewing Angle

The viewing angle of SMD is overall wider than DIP. DIP, (Dual In-line Package) is older technology, and can't offer the same resolutions as our SMD TL-USIII line. Wider viewing can reach a greater range of visibility to improve efficiency of advertising, with TL-USIII the possibilities are endless.

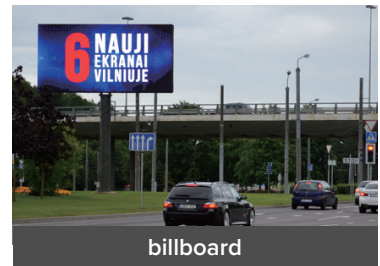
Applications



corporate



sports



billboard

Product Specifications

OUTDOOR LED SOLUTION

Model	TL-USIII 6	TL-USIII 8	TL-USIII 10
LED Type	3-in-1 SMD	3-in-1 SMD	3-in-1 SMD
Pixel Pitch	6.7mm	8.3mm	10mm
Pixels Per Panel	120 x 135 pixels	96 x 108 pixels	80 x 90 pixels
Pixel Density	22,500 pixels/m ²	14,400 pixels/m ²	10,000 pixels/m ²
Module Size	400mm x 300mm (15.7in x 11.8in)	400mm x 300mm (15.7in x 11.8in)	400mm x 300mm (15.7in x 11.8in)
Cabinet Size (W x H x D)	800mm x 900mm x 96mm (31.5in x 35.4in x 3.8in)	800mm x 900mm x 96mm (31.5in x 35.4in x 3.8in)	800mm x 900mm x 96mm (31.5in x 35.4in x 3.8in)
Material	Die-casting Aluminum	Die-casting Aluminum	Die-casting Aluminum
Viewing Angle (H/V)	140° / 120°	140° / 120°	140° / 120°
Panel Weight (Front/Rear)	21kg (46.3 lbs) / 18.5kg (40.79 lbs)	21kg (46.3 lbs) / 18.5kg (40.79 lbs)	21kg (46.3 lbs) / 18.5kg (40.79 lbs)
Aspect Ratio	8:9	8:9	8:9
Serviceability	Front/Rear	Front/Rear	Front/Rear
Brightness	6,500 - 8,000 cd/m ² (nits)	6,500 - 8,000 cd/m ² (nits)	6,500 - 8,000 cd/m ² (nits)
Color Temperature	2,000 - 9,500 K adjustable	2,000 - 9,500 K adjustable	2,000 - 9,500 K adjustable
Contrast Ratio	(5,500-9,000):1	(5,500-9,000):1	(5,500-16,000):1
Input Power (Max/Typical)	650-800 W/m ² 217-267 W/m ²	650-800 W/m ² 217-267 W/m ²	650-800 W/m ² 217-267 W/m ²
Ingress Protection (Front/Rear)	IP65/IP54	IP65/IP54	IP65/IP54
Input Voltage	100-240 VAC	100-240 VAC	100-240 VAC
Refresh Rate	3,840 Hz	3,840 Hz	3,840 Hz
Operating Temp. / Humidity	-20° - 50° / 10% - 90% RH	-20° - 50° / 10% - 90% RH	-20° - 50° / 10% - 90% RH
Storage Temp. / Humidity	-30° - 60° / 10% - 80% RH	-30° - 60° / 10% - 80% RH	-30° - 60° / 10% - 80% RH
Certifications	CE, FCC, UL, CB	CE, FCC, UL, CB	CE, FCC, UL, CB