



 Front Maintenance

 Seamless Splicing

 HDR Highly Dynamic

Intelligent Front Access 16:9 LED Display Unit

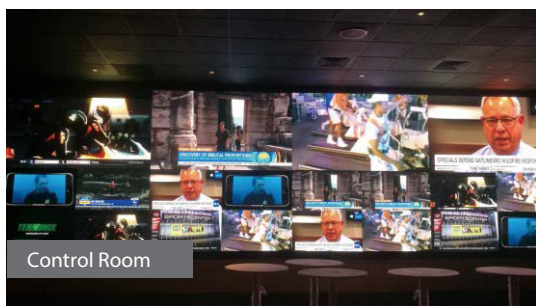


TAA Compliant: TLX-UpanelS-TMP is manufactured in the United States or countries designated in the U.S. Trade Agreements Act (TAA).

PRODUCT FEATURES

- Intelligent front maintenance – featuring software and smart bracelet induction
- HDR highly dynamic display – offers a stunning visual experience (Optional)
- Cabinet and module are separate structures – makes for better heat dissipation
- Seamless splicing between cabinets and modules
- High grayscale under low brightness

APPLICATIONS



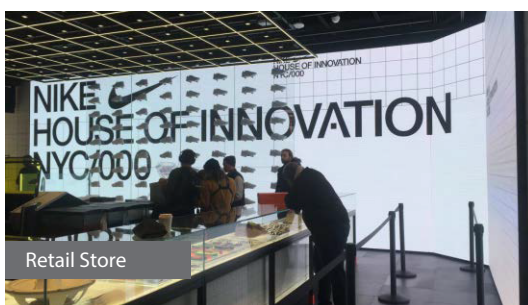
Control Room



Conference Room



Broadcasting



Retail Store



PROUDLY BASED
IN THE USA

Module Parameters	TLX-UpanelS0.9-TMP	TLX-UpanelS1.2-TMP	TLX-UpanelS1.5-TMP	TLX-UpanelS1.9-TMP	TLX-UpanelS2.5-TMP
Pitch(mm)	0.95	1.27	1.58	1.90	2.54
Pixel Density (pixels/m ²)	1,101,068	620,001	396,550	275,267	155,000
Pixels Per Panel (pixels) (HxW)	360*640	270*480	216*384	180*320	135*240
Panel Dimensions (in, mm) (HxW)	13.5 x 24 x 2.7 343.08*609.92*71				

Parameters

Weight (lbs)	14.9
Brightness cd/m ² (nits)	600
Refresh Rate (Hz)	1920 - 3840
Viewing Angle (H/V)	160° / 160°
Color Temperature (K)	2000-9500 (Adjustable)
Material	Die-casting Magnesium Aluminum

System Parameters

AC Voltage (V)	100~240
Max. / Avg. Input Power (w/m ²)	150 / 50 140 / 46 140 / 46 117 / 42 80 / 26
Aspect Ratio (W:H)	16:9
IP Rating (Rear)	IP50
Brightness Control	Manual / Automatic
Operating / Storage Temperature (°F)	14°~+113° / -4°~+131°
Operating / Storage Humidity (RH)	10%~80% / 10%~85%
Maintenance	Front

Specifications are subject to change without notice.

DIMENSIONS

